

Description

The 6001 network interface card is used to form a ring network of Numens control and indicating equipment and repeaters. The network is compatible with both addressable and non-addressable control and indicating equipment.

Robust data communications uses separate transmit and receive transmission paths to provide superior reliability. The transmission paths are constantly monitored for fault conditions in the wiring. A single fault will continue to allow network communications.

The 6001 network interface card provides fire detection and alarm system designers with a flexible solution to provide multiple networked systems for life safety and property protection applications.

Features

- RS-422/RS-485 data communications protocol
- Ring topology
- Monitoring of short- and open-circuit conditions in the transmission path
- Fault-tolerant transmissions allows continuous data communications with a single fault in the transmission path
- Easy installation in existing control panel enclosures

Compliance

6001 network interface cards have the following compliance.

	EN 54-2 ^{a, b}
6001-03	✓

^a EN 54-2 Control and indicating equipment

^b Third-party conformance assessment has not been undertaken.

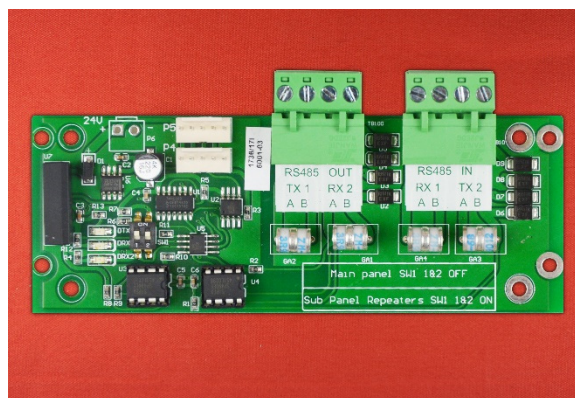
Specifications

	6001-03
Operating voltage	DC (17 ~ 30) V
Quiescent current	14 mA
Data communications	RS-422/RS-485
Number of networked nodes	4
Terminal wiring	(0.4 ~ 2.5) mm ²
Operating temperature	(-5 ~ +40) °C
Operating humidity	(0 ~ 95) % RH, non-condensing
Storage temperature	(-25 ~ +80) °C
Storage humidity	(0 ~ 98) % RH, non-condensing
Dimensions (h × w × d)	(47 × 119 × 22) mm

Ordering Information

6001-03

View the complete range of products at
www.numens.com



6001 network interface card