

### Description

The 6002-12 wireless loop expansion card provides four wireless addressable loops to expand the device capacity of the 6002 control and indicating equipment.

The 6002-12 wireless loop expansion card provide fire detection and alarm system designers with high-quality products that meet the standards for life safety and property protection applications through hardwired seamless with wireless nodes. Up to 128 wireless node can be connected to the 4-loop expansion card.

The 6002-12 wireless loop expansion card provides fire detection and alarm system designers with the increased device capacity required for medium and larger life safety and property protection applications.

### Features

- Four wireless addressable loops
- Supports 128 wireless nodes
- Supports 500 wireless addressable devices
- Mounts within the control and indicating equipment enclosure
- Easy installation and configuration

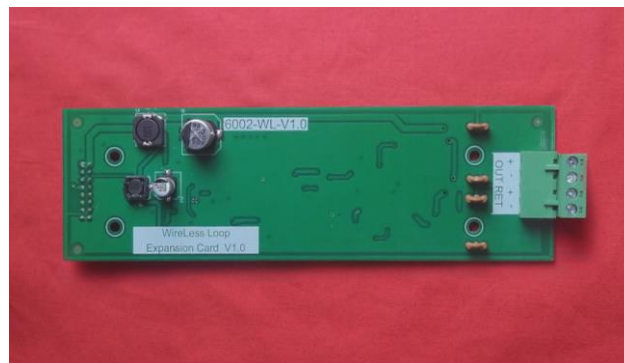
### Compliance

The 6002-12 4-loop expansion card has the following compliance<sup>a</sup>.

	EN 54-2 <sup>b</sup>	CE
6002-12	✓	✓

<sup>a</sup> Third-party conformance assessment has not been undertaken.

<sup>b</sup> EN 54-2 Control and indicating equipment



6002-12 4-loop expansion card

### Specifications

Power	6002-12
Operating voltage	DC (20 ~ 30) V
Operating current (quiescent)	30 mA @ 27.5 V
Operating	
Addressable loops	4
Number of connected nodes per loop	32
Number of nodes connectable to a 4-loop expansion card	64
Loop current (max), each	1.4A
Loop monitoring	Open- and short-circuit
Environmental	
Operating temperature	(-5 ~ +40) °C
Operating humidity	(0 ~ 95) % RH, non-condensing
Storage temperature	(-25 ~ +80) °C
Storage humidity	(0 ~ 98) % RH, non-condensing
Miscellaneous	
Terminal wiring	(0.4 ~ 2.5) mm <sup>2</sup>
Dimensions (l × w × h)	(175 × 51 × 25) mm
Weight (excluding batteries)	52g

### Ordering Information

6002-12

View the complete range of products at  
[www.numens.com](http://www.numens.com)

